





# Solemnisation Dome

The mahogany interior is endowed with vast natural light in the day and accented with luxurious warm lighting in the night through its window walls, making this sky-high glasshouse an ideal place to host lavish weddings

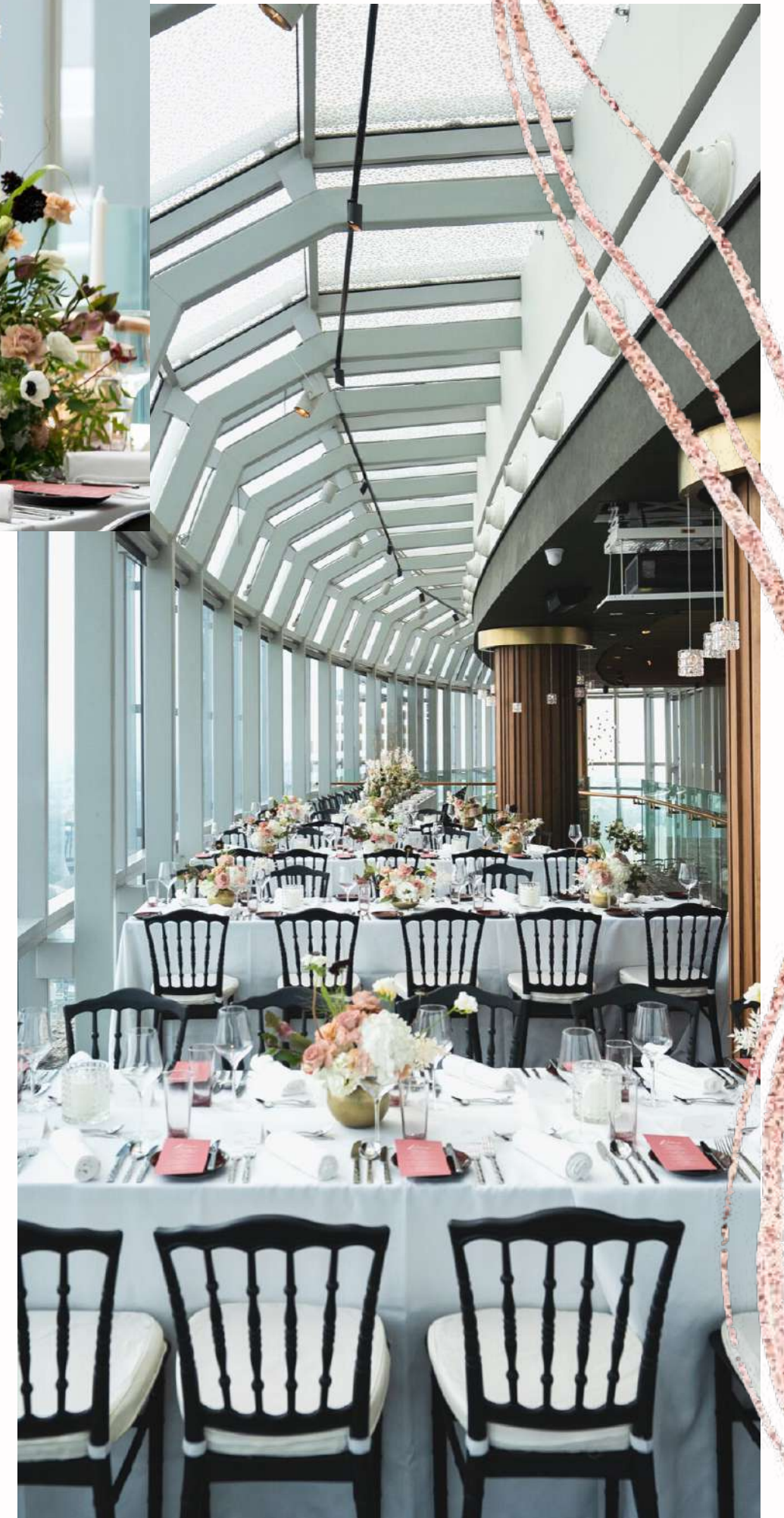




# Restaurant

The palatial restaurant seats 100 guests to a maximum capacity of 238 guests and looks out to a panoramic 180-degree view of the city skyline.

As your guests feast on gastronomic delights curated by culinary maestros, they will be captivated by a sunset view and watch as that changes to the pulsing lights of the city.

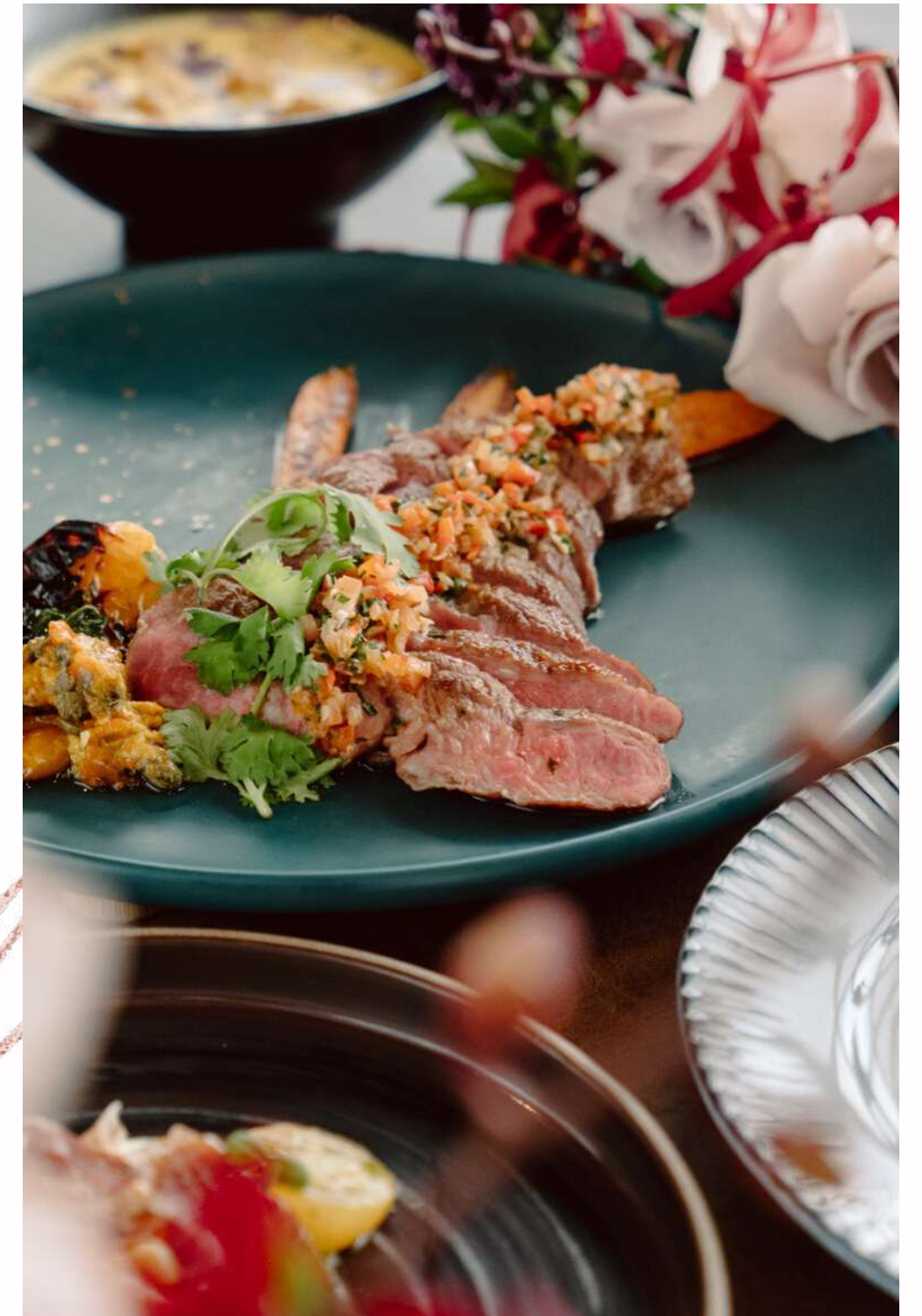




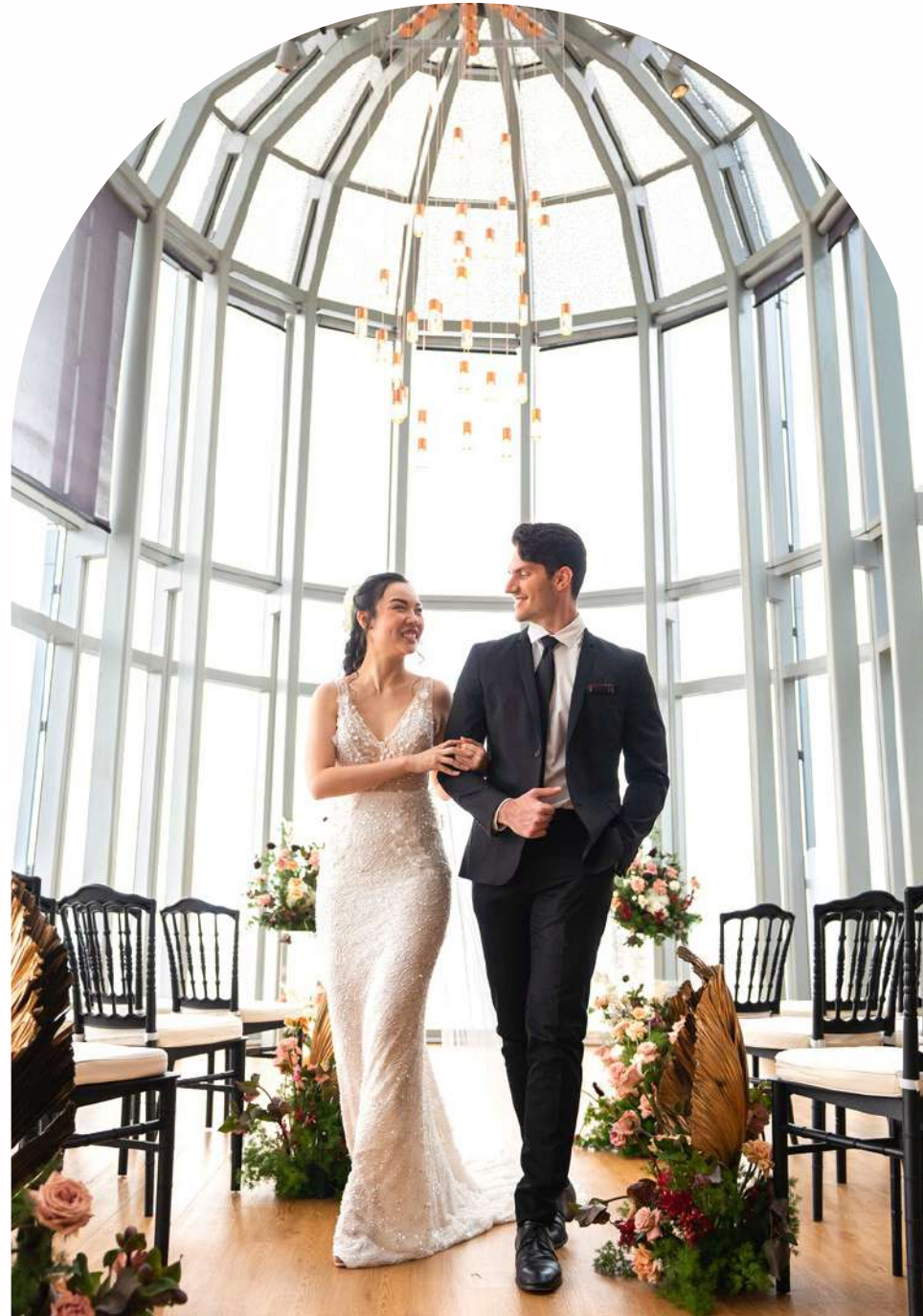
# Cuisine

Featuring an exquisite repertoire of delights specially curated by our in-house culinary maestros.

Dine on cloud nine amidst with a sky-high spectacle of the city that changes along with the pulsing lights of the city as it transitions throughout the day







Photography: @DanielBeh | Videography: @FreyaFilms | Gowns: @TrulyEnamoured | Stationery: @NineteenDesign | Patisserie: @YumePatisserie | Styling: 1-Pixies by 1-Host



# Floor Plan

## CAPACITY

Restaurant (Seated)

Pre-Covid

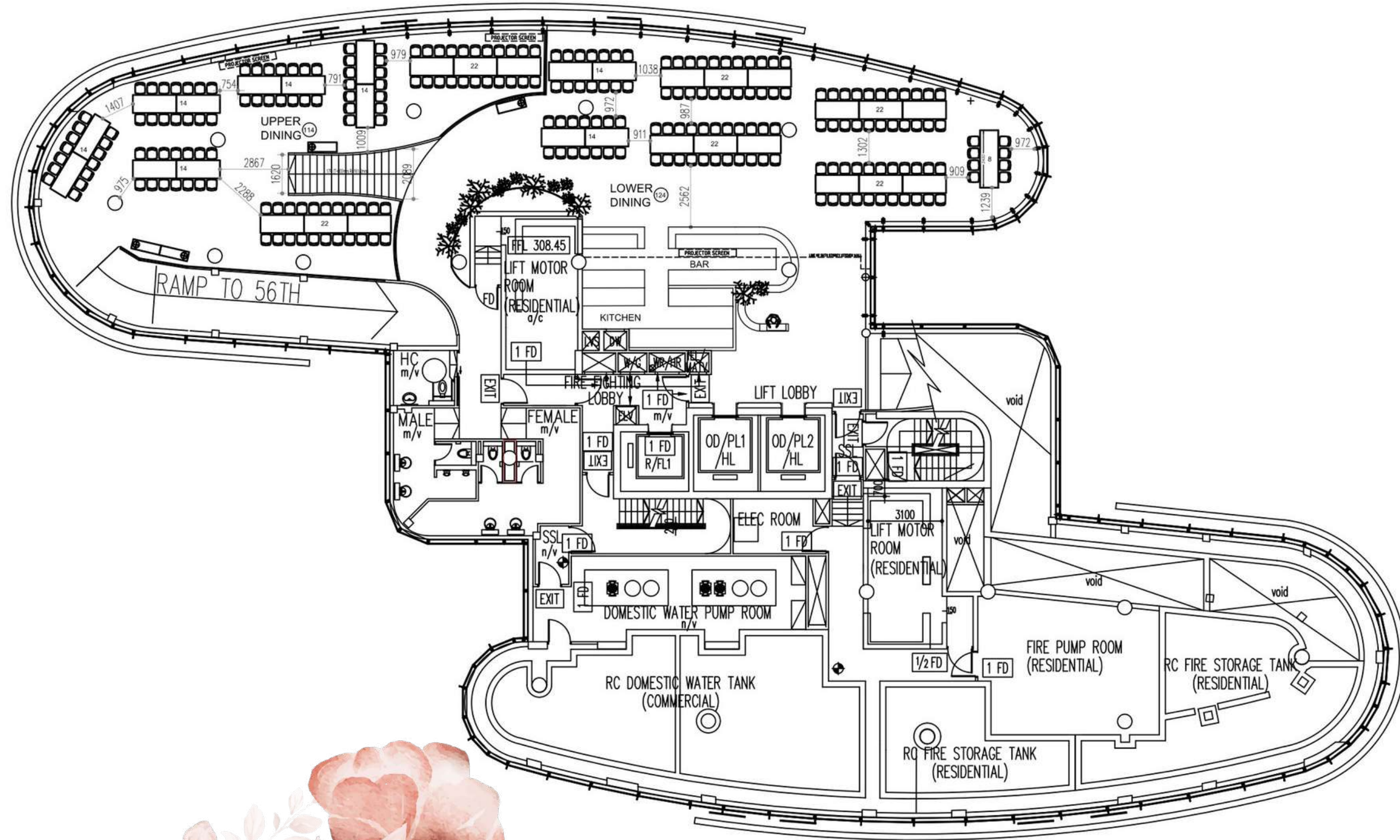
238pax

With safe distancing measures

Up to 168 pax

## FACILITIES

- Full-Service Bar
- AV Equipment
- Projector & Screen
- Bridal Room



# Fact Sheet



## LOCATION

2 Orchard Turn, Level 55 & 56, Singapore 238801

## GETTING HERE

TRAIN: NS22 Orchard MRT Station

BUS:

Orchard Turn (09023) - 14E, 124, 128, 143, 162, 162M, 502, 502A, 502B

Orchard Boulevard (09022) - 7, 14, 16, 36, 65, 111, 123, 174, 174E, 175

Orchard Road - Opp Tangs (09047) - 36, 124, 128, 143, 162, 162M, 174, 174E, 518, 518A, 518B

CAR: Valet service on level 2 & 6 of ION carpark

*Mon to Thu | 10am - 10pm*

*Fri to Sun & PH | 10am - 11pm*

CONCIERGE: Level 4 of ION

*For directions on getting to level 55 & 56*

## FACILITIES

Full Service Bar | Bridal Room | AV Equipment  
| Projector & Screen

## EXTENDED SERVICES

DJs | LIVE Bands | Emcees | Wedding Favours  
| Invitation Cards | Cakes | Floral Decor

## CAPACITY

Solemnisation (Seated)

Up to 60pax

Restaurant (Seated)

Pre-Covid: 238pax

With safe distancing measures: Up to 168pax





# ATICO<sup>o</sup>

2 Orchard Turn, Level 55 & 56  
Singapore 238801

enquiry@1-atigo.sg  
+65 8128 9747

Events Arm: 1-Host  
www.1-host.sg

